

GENERAL NOTES:

1. FIELD SURVEY DATE:

N/A

2. VERTICAL DATUM:

NORTH AMERICAN VERTICAL DATUM OF 1988 (NAVD88)

3. HORIZONTAL DATUM:

NORTH AMERICAN DATUM OF 1983 (NAD83)

5. PROPERTY OWNER:

PAONE SR ANTHONY K TRSTEE
A & P DEVELOPMENT TRUST
141 SYLVESTER AVE
WINCHESTER, MA 01890

6. APPLICANT:

SPRINT
1 INTERNATIONAL BLVD,
SUITE 800
MAHWAH, NJ 07495

7. JURISDICTION:

CITY OF SOMERVILLE

8. TAX MAP & ID

MAP:58 BLOCK: D LOT:14

9. ZONING JURISDICTION:

CITY OF SOMERVILLE

10. PROPERTY LINE INFORMATION IS COMPILED FROM SOMERVILLE'S ONLINE GIS SYSTEM AND MASS GIS, AND IS NOT TO BE CONSTRUED AS HAVING BEEN OBTAINED AS THE RESULT OF A FIELD BOUNDARY SURVEY, AND IS SUBJECT TO CHANGE AS AN ACCURATE FIELD SURVEY MAY DISCLOSE. A FULL BOUNDARY SURVEY WAS NOT PERFORMED.

11. BEARING SYSTEM OF THIS PLAN IS BASED ON TRUE NORTH. TRUE NORTH WAS ESTABLISHED FROM EXISTING PLAN REFERENCE. IT IS NOT INTENDED TO BE AN EXACT REPRESENTATION OF TRUE NORTH.

LEGEND

PROPERTY LINE

ABUTTING PROPERTY LINE

EXIST. STREET LAYOUT

BB

C-1

ZONING BOUNDARY LINE

ZONING SUMMARY TABLE		
ZONING DISTRICT:CORRIDOR COMMERCIAL DISTRICT (CCD55)		
ASSESSORS ID: MAP: 58 BLOCK: D LOT: 14		
PROPOSED USE: WIRELESS COMMUNICATION FACILITY		
DIMENSION:	REQUIRED MINIMUM	PROVIDED
LOT AREA	600 SQ/FT	12,079 ± SQ/FT
LOT FRONTAGE	30'	85± FT
FRONT YARD SETBACK*	NA	23± FT
SIDE YARD SETBACK*	NA	23± FT
REAR YARD SETBACK*	NA	42± FT
MAXIMUM ZONING HEIGHT	NA	9± FT ABOVE ROOF
*PROPOSED EQUIPMENT TO NEAREST LOT LINE		

Sprint

VISION

1 INTERNATIONAL BLVD, SUITE 800
MAHWAH, NJ 07495
(201) 684-4000

J LEE ASSOCIATES, LLC

753 FOREST STREET
MARLBOROUGH, MA 01752-3047
PHONE: (800) 825-6460
www.guardian-energy.com

ADVANCED

ENGINEERING GROUP, P.C.

Civil Engineering - Site Development
Surveying - Telecommunications

500 NORTH BROADWAY
EAST PROVIDENCE, RI 02914
PH: 401-354-2403
FAX: 401-633-6354

COMMONWEALTH OF MASSACHUSETTS

MARC CHRETIEN

CIVIL No. 40313

REGISTERED PROFESSIONAL ENGINEER

ENGINEER/LAND SURVEYOR

DATE

IT IS A VIOLATION OF LAW FOR ANY PERSON, UNLESS THEY ARE ACTING UNDER THE DIRECTION OF A LICENSED PROFESSIONAL ENGINEER, TO ALTER THIS DOCUMENT.

REVISIONS

REV. #	DATE	DESCRIPTION
1	02/05/14	ISSUED FOR ZONING
0	01/29/14	ISSUED FOR REVIEW

PROJECT NO.

DESIGNED BY:

DRAWN BY:

CHECKED BY:

REM

MRC

SCALE

AS SHOWN

PROJECT INFORMATION

BS60XC010
331 BROADWAY

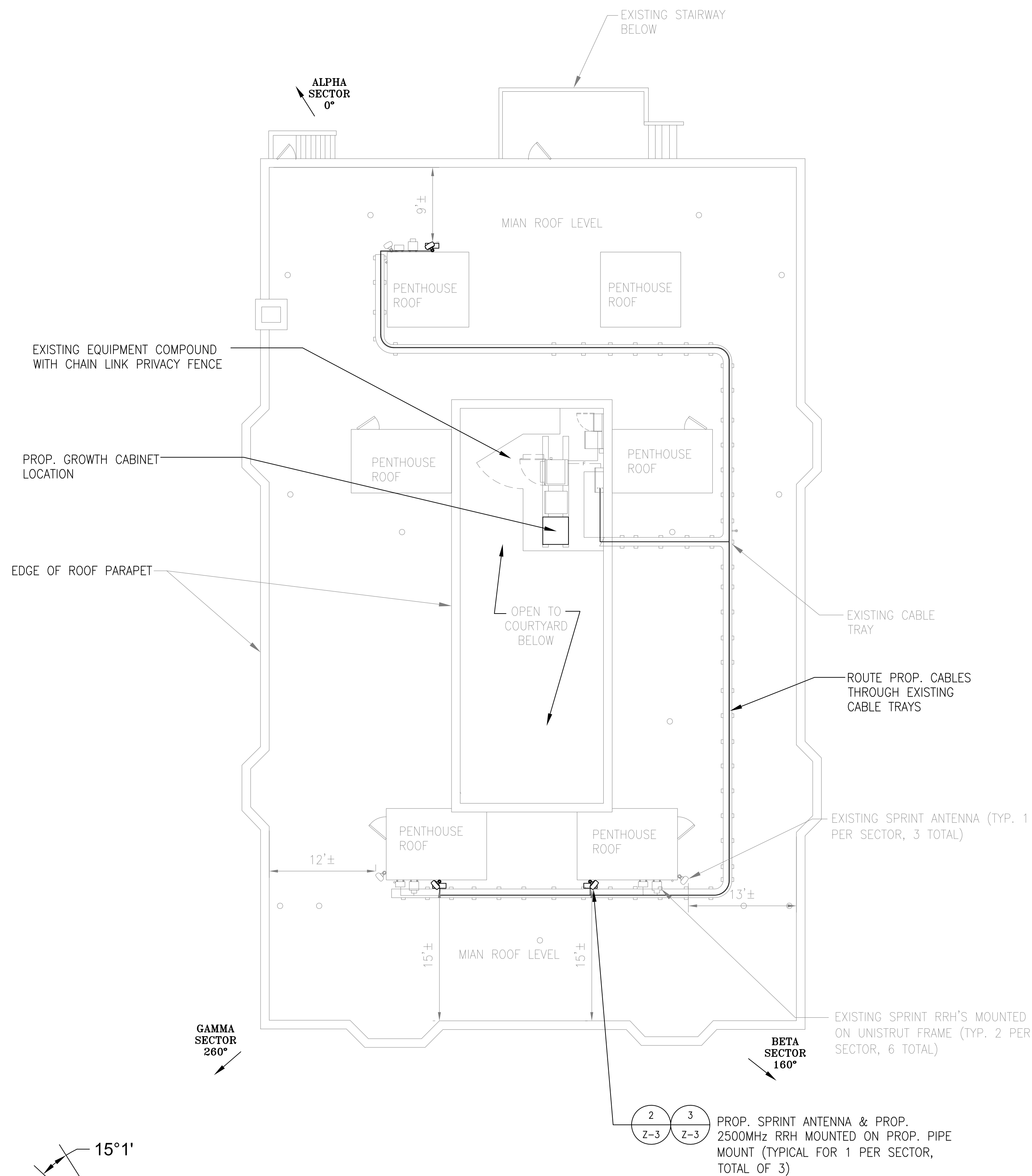
331-333 BROADWAY
SOMERVILLE, MA 02143

DRAWING TITLE

PLOT PLAN

DRAWING NUMBER

C-1



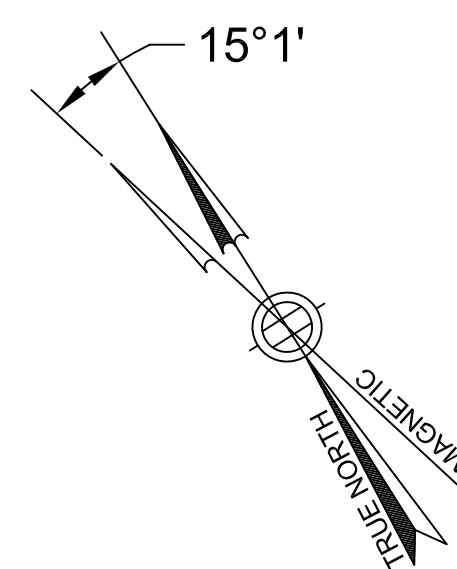
1
Z-1

ROOF PLAN

SCALE: 1/8"=1'-0"

0 4' 8' 16' 32'

INSTALL (1) PROP. STRINGS OF BATTERIES (4 BATTERIES TOTAL) IN PROP. GROWTH CABINET



2
Z-1

PROPOSED EQUIPMENT PLAN

SCALE: 1/4"=1'-0"

0 2' 4' 8' 16'

EXISTING SPRINT 9927/9928 MMBTS CABINET



EXISTING SPRINT BACK UP BATTERY CABINET

EXISTING SPACE FOR SPRINT GROWTH CABINET

3
Z-1

EQUIPMENT PHOTO DETAIL

SCALE: N.T.S.

Sprint
VISION

1 INTERNATIONAL BLVD, SUITE 800
MAHWAH, NJ 07495
(201) 684-4000

J LEE ASSOCIATES, LLC

753 FOREST STREET
MARLBOROUGH, MA 01752-3047
PHONE: (800) 825-6460
www.guardian-energy.com

ADVANCED
ENGINEERING GROUP, P.C.

Civil Engineering - Site Development
Surveying - Telecommunications

500 NORTH BROADWAY
EAST PROVIDENCE, RI 02914
PH: 401-354-2403
FAX: 401-633-6354



ENGINEER/LAND SURVEYOR

DATE

IT IS A VIOLATION OF LAW FOR ANY PERSON, UNLESS THEY ARE ACTING UNDER THE DIRECTION OF A LICENSED PROFESSIONAL ENGINEER, TO ALTER THIS DOCUMENT.

REVISIONS

REV. #	DATE	DESCRIPTION
1	02/05/14	ISSUED FOR ZONING
0	01/29/14	ISSUED FOR REVIEW

PROJECT NO.	DESIGNED BY:	SCALE
	DRAWN BY: REM	AS SHOWN
	CHECKED BY: MRC	

PROJECT INFORMATION

BS60XC010
331 BROADWAY

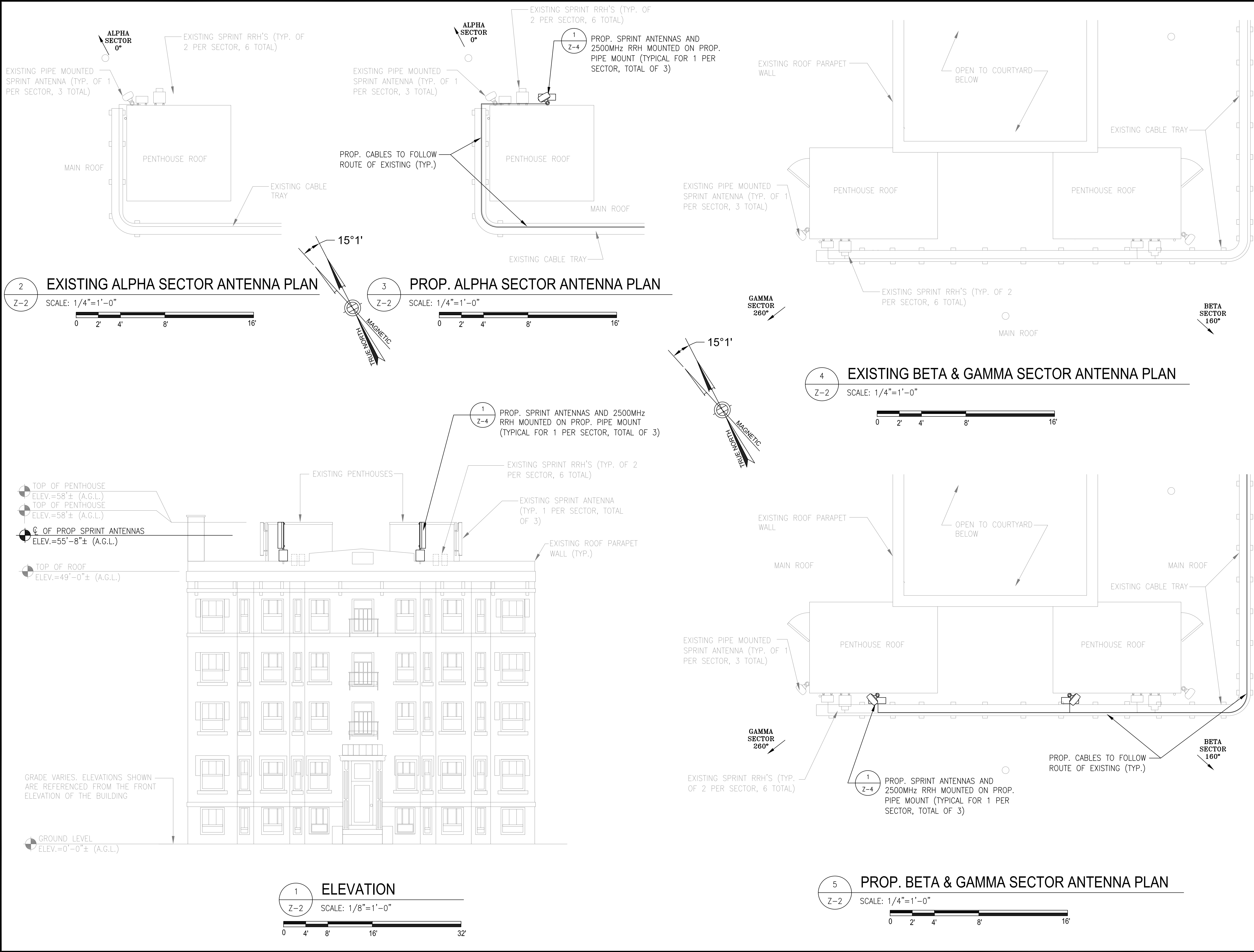
331-333 BROADWAY
SOMERVILLE, MA 02143

DRAWING TITLE

ROOF AND EQUIPMENT PLANS

DRAWING NUMBER

Z-1



1 INTERNATIONAL BLVD, SUITE 800
MAHWAH, NJ 07495
(201) 684-4000

J LEE ASSOCIATES, LLC

753 FOREST STREET
MARLBOROUGH, MA 01752-3047
PHONE: (800) 825-6460
www.guardian-energy.com

ADVANCED ENGINEERING GROUP, P.C.
Civil Engineering - Site Development
Surveying - Telecommunications

500 NORTH BROADWAY
EAST PROVIDENCE, RI 02914
PH: 401-354-2403
FAX: 401-633-6354

ENGINEER/LAND SURVEYOR DATE

IT IS A VIOLATION OF LAW FOR ANY PERSON, UNLESS THEY ARE ACTING UNDER THE DIRECTION OF A LICENSED PROFESSIONAL ENGINEER, TO ALTER THIS DOCUMENT.

REVISIONS		
REV. #	DATE	DESCRIPTION
1	02/05/14	ISSUED FOR ZONING
0	01/29/14	ISSUED FOR REVIEW

PROJECT NO.	DESIGNED BY:	SCALE
	DRAWN BY: REM	AS SHOWN
	CHECKED BY: MRC	

PROJECT INFORMATION

BS60XC010
331 BROADWAY

331-333 BROADWAY
SOMERVILLE, MA 02143

DRAWING TITLE

ELEVATION AND ANTENNA PLANS

DRAWING NUMBER

Z-2

HYBRID CABLE DC CONDUCTOR SIZE GUIDELINE				
MANUF:	RFS			
CABLE	LENGTH	DC CONDUCTOR	CABLE DIAMETER	
FIBER ONLY	VARIES	USE NV HYBRIFLEX	5/8"	
HYBRIFLEX	<200'	8 AWG	1-1/4"	
HYBRIFLEX	225-300'	6 AWG	1-1/4"	
HYBRIFLEX	325-375'	4 AWG	1-1/4"	

RFS HYBRIFLEX RISER CABLE SCHEDULE

Fiber Only (Existing DC Power)	Hybrid cable MN: HB058-M12-050F 12x multi-mode fiber pairs, Top: Outdoor protected connectors, Bottom: LC Connectors, 5/8 cable, 50 ft	50 ft
	MN: HB058-M12-075F	75 ft
	MN: HB058-M12-100F	100 ft
	MN: HB058-M12-125F	125 ft
	MN: HB058-M12-150F	150 ft
	MN: HB058-M12-175F	175 ft
	MN: HB058-M12-200F	200 ft

8 AWG Power	Hybrid cable MN: HB114-08U3M12-050F 3x 8 AWG power pairs, 12x multi-mode fiber pairs, Outdoor rated connectors & LC Connectors, 1 1/4 cable, 50 ft	50 ft
	MN: HB114-08U3M12-075F	75 ft
	MN: HB114-08U3M12-100F	100 ft
	MN: HB114-08U3M12-125F	125 ft
	MN: HB114-08U3M12-150F	150 ft
	MN: HB114-08U3M12-175F	175 ft
	MN: HB114-08U3M12-200F	200 ft

6 AWG Power	Hybrid cable MN: HB114-13U3M12-225F 3x 6 AWG power pair, 12x multi-mode fiber pairs, Outdoor rated connectors & LC Connectors, 1 1/4 cable, 225 ft	225 ft
	MN: HB114-13U3M12-250F	250 ft
	MN: HB114-13U3M12-275F	275 ft
	MN: HB114-13U3M12-300F	300 ft

4 AWG Power	Hybrid cable MN: HB114-21U3M12-325F 3x 4 AWG power pair, 12x multi-mode fiber pairs, Outdoor rated connectors & LC Connectors, 1 1/4 cable, 325 ft	325 ft
	MN: HB114-21U3M12-350F	350 ft
	MN: HB114-21U3M12-375F	375 ft

RFS HYBRIFLEX JUMPER CABLE SCHEDULE

Fiber Only	Hybrid Jumper cable MN: HBF012-M3-5F1 5 ft, 3x multi-mode fiber pairs, Outdoor & LC connectors, 1/2 cable	5 ft
	MN: HBF012-M3-10F1	10 ft
	MN: HBF012-M3-15F1	15 ft
	MN: HBF012-M3-20F1	20 ft
	MN: HBF012-M3-25F1	25 ft
	MN: HBF012-M3-30F1	30 ft

8 AWG Power	Hybrid Jumper cable MN: HBF058-08U1M3-5F1 5 ft, 1x 8 AWG power pair, 3x multi-mode fiber pairs, Outdoor & LC Connectors, 5/8 cable	5 ft
	MN: HBF058-08U1M3-10F1	10 ft
	MN: HBF058-08U1M3-15F1	15 ft
	MN: HBF058-08U1M3-20F1	20 ft
	MN: HBF058-08U1M3-25F1	25 ft
	MN: HBF058-08U1M3-30F1	30 ft

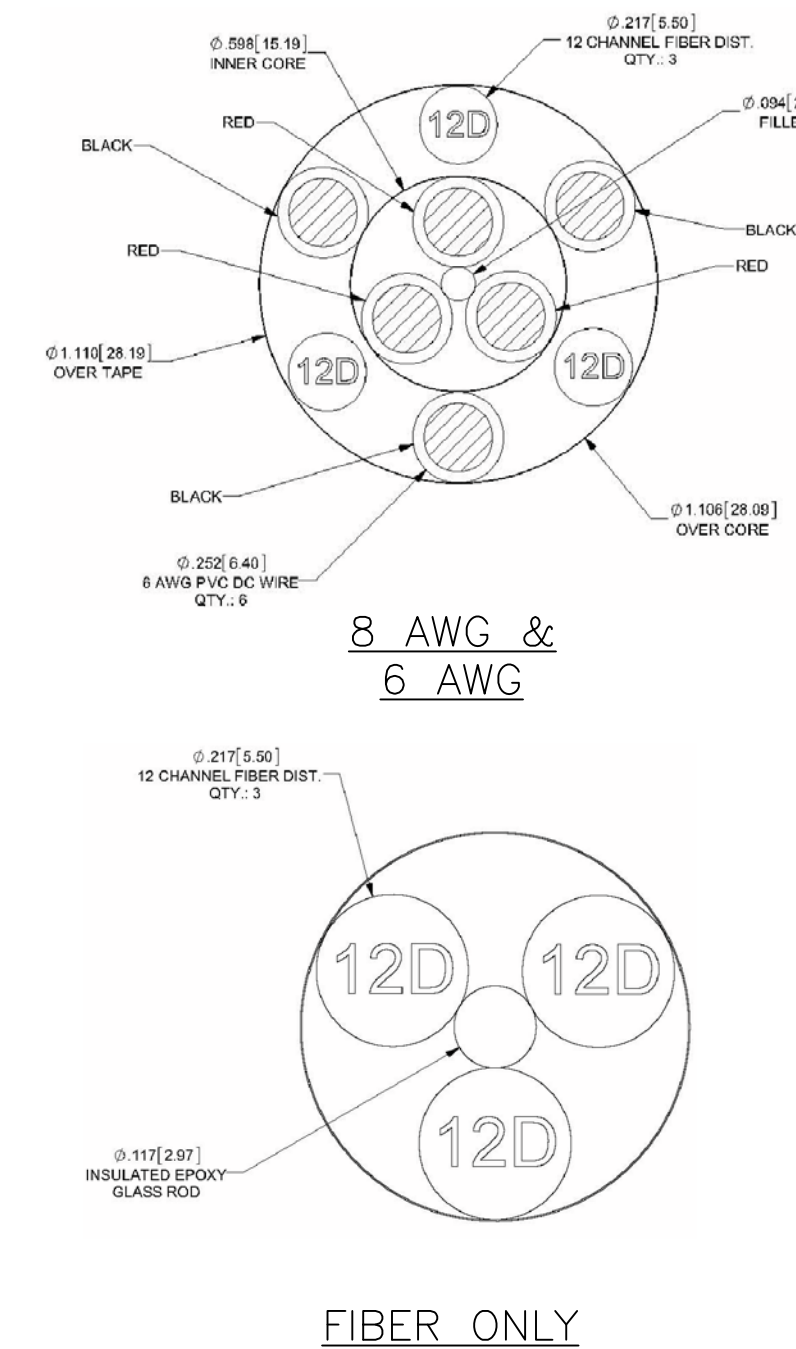
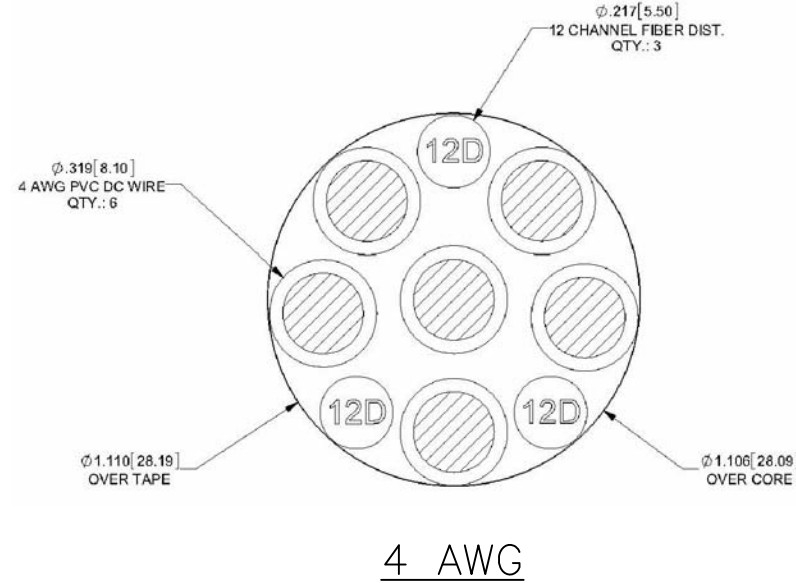
6 AWG Power	Hybrid Jumper cable MN: HBF058-13U1M3-5F1 5 ft, 1x 6 AWG power pair, 3x multi-mode fiber pairs, Outdoor & LC Connectors, 5/8 cable	5 ft
	MN: HBF058-13U1M3-10F1	10 ft
	MN: HBF058-13U1M3-15F1	15 ft
	MN: HBF058-13U1M3-20F1	20 ft
	MN: HBF058-13U1M3-25F1	25 ft
	MN: HBF058-13U1M3-30F1	30 ft

4 AWG Power	Hybrid Jumper cable MN: HBF078-21U1M3-5F1 5 ft, 1x 4 AWG power pair, 3x multi-mode fiber pairs, Outdoor & LC Connectors, 7/8 cable	5 ft
	MN: HBF078-21U1M3-10F1	10 ft
	MN: HBF078-21U1M3-15F1	15 ft
	MN: HBF078-21U1M3-20F1	20 ft
	MN: HBF078-21U1M3-25F1	25 ft
	MN: HBF078-21U1M3-30F1	30 ft

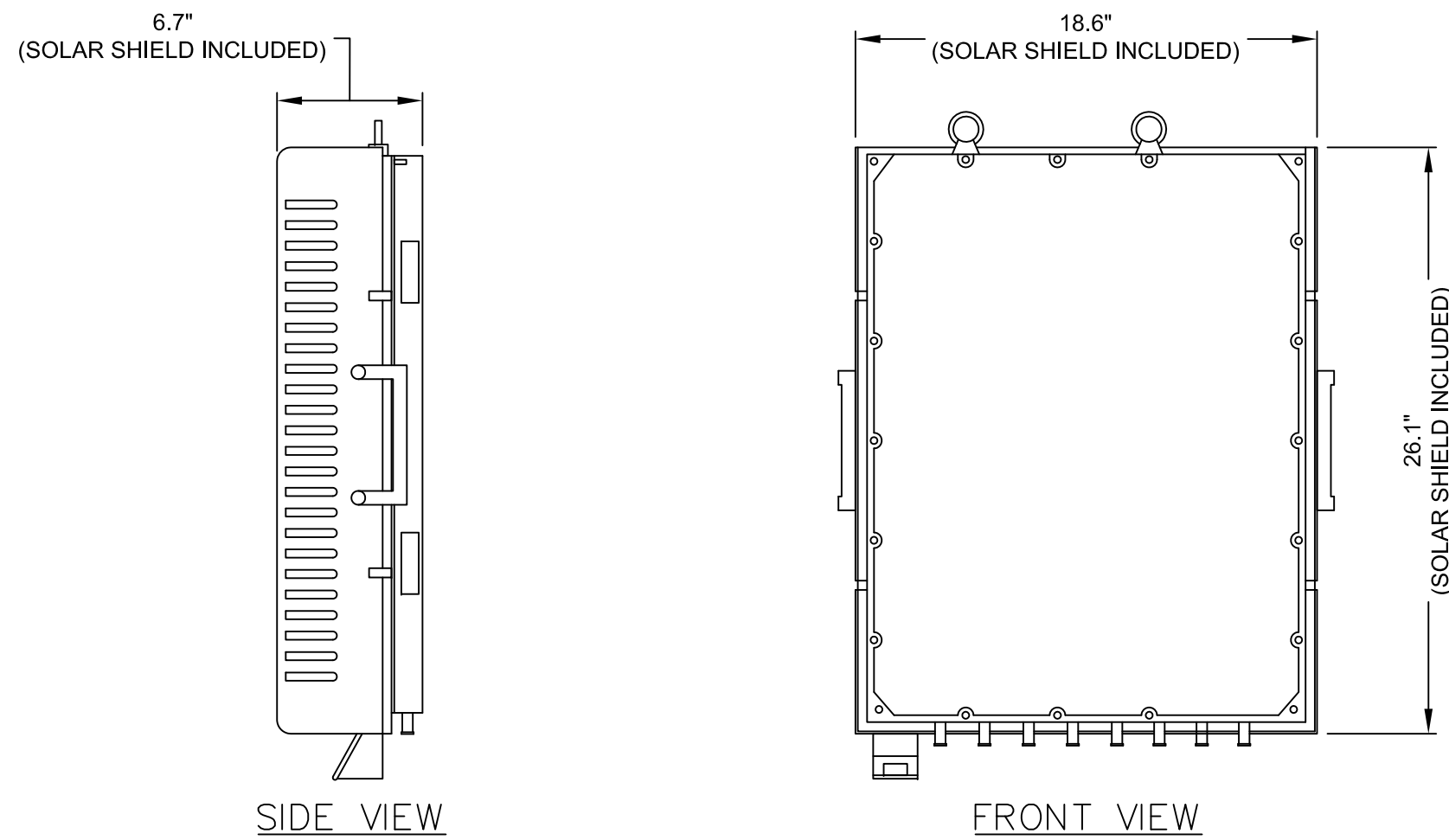
* NOTE: SPRINT CM TO CONFIRM HYBRID RISER CABLE AND HYBRID JUMPER CABLE MODEL NUMBERS BEFORE PREPARING BOM.

2500MHz HYBRID CABLE X-SECTION & DATA

SCALE: N.T.S.

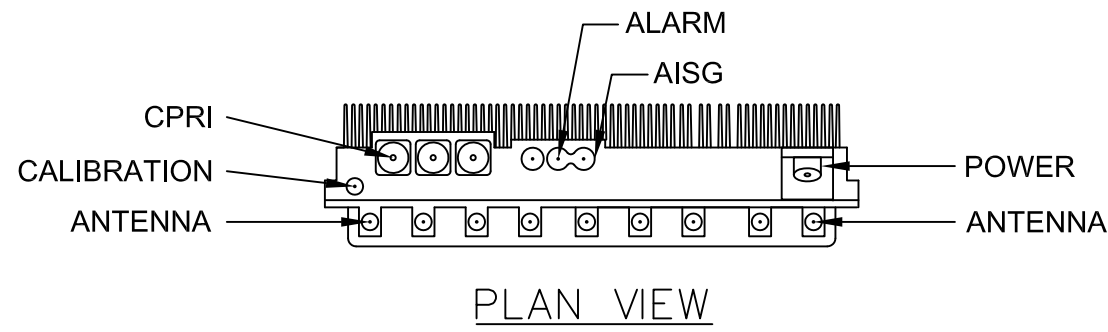


FIBER ONLY



TD-RRH8x20-25 REMOTE RADIO HEAD

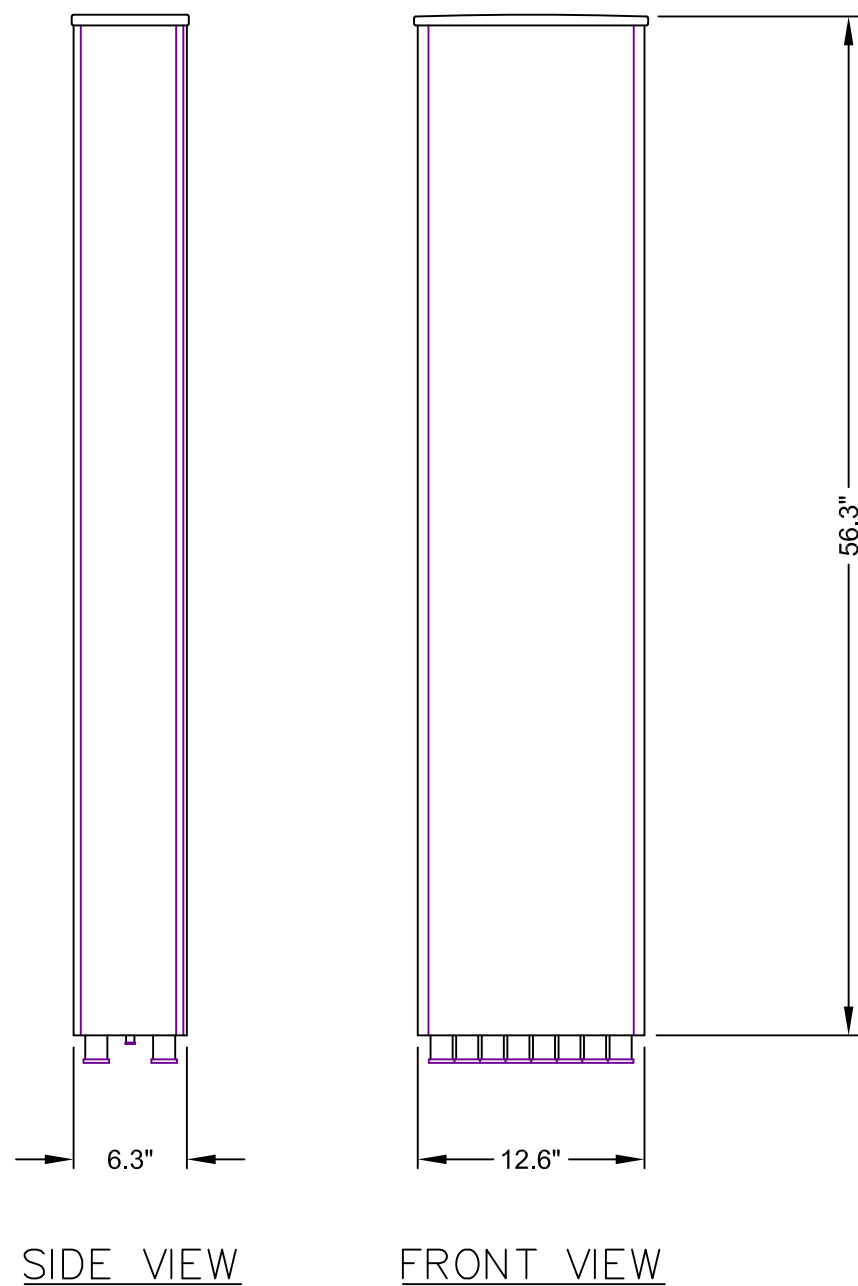
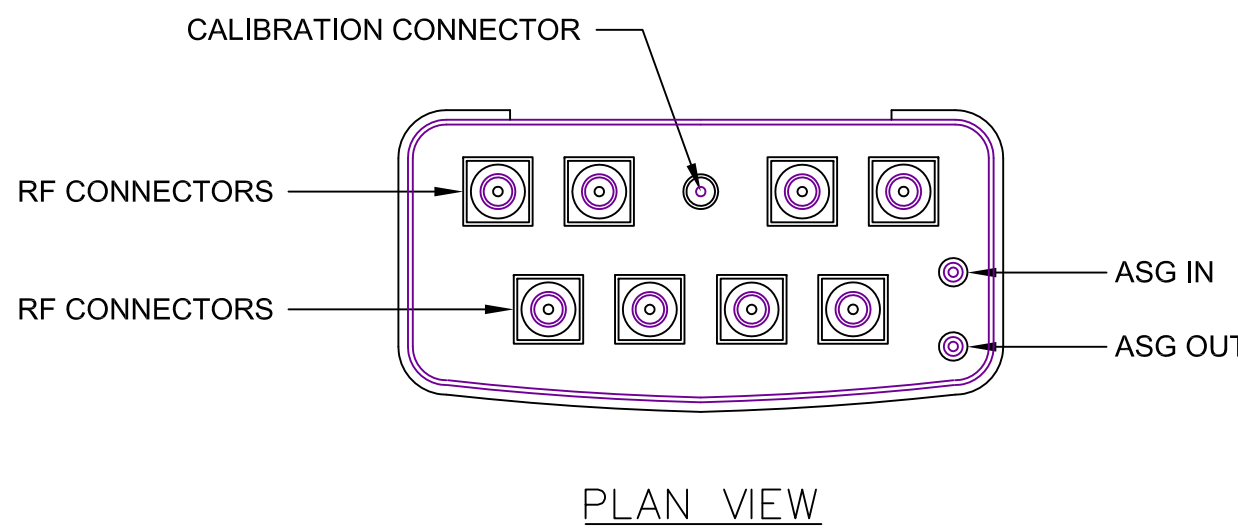
DIMENSIONS: 26.1"x18.6"x6.7"
WEIGHT: 60 LBS W/ HARDWARE



DETAILS: 2500MHz RRH

SCALE: N.T.S.

MANUF:	RFS
MODEL:	APXVIM14-C-120
LENGTH:	56.3"
WIDTH:	12.6"
DEPTH:	6.3"
WEIGHT:	70 LBS
AREA:	4.9 SF



2.5 ANTENNA SPECIFICATIONS

SCALE: N.T.S.

Sprint
VISION

1 INTERNATIONAL BLVD, SUITE 800
MAHWAH, NJ 07495
(201) 684-4000

J LEE ASSOCIATES, LLC

753 FOREST STREET
MARLBOROUGH, MA 01752-3047
PHONE: (800) 825-6460
www.guardian-energy.com



Civil Engineering - Site Development
Surveying - Telecommunications

500 NORTH BROADWAY
EAST PROVIDENCE, RI 02914
PH: 401-354-2403
FAX: 401-633-6354



ENGINEER/LAND SURVEYOR

DATE

IT IS A VIOLATION OF LAW FOR ANY PERSON,
UNLESS THEY ARE ACTING UNDER THE DIRECTION
OF A LICENSED PROFESSIONAL ENGINEER,
TO ALTER THIS DOCUMENT.

REVISIONS

REV. #	DATE	DESCRIPTION
1	02/05/14	ISSUED FOR ZONING
0	01/29/14	ISSUED FOR REVIEW

PROJECT NO.	DESIGNED BY:	SCALE
	DRAWN BY: REM	AS SHOWN
	CHECKED BY: MRC	

PROJECT INFORMATION

BS60XC010
331 BROADWAY

331-333 BROADWAY
SOMERVILLE, MA 02143

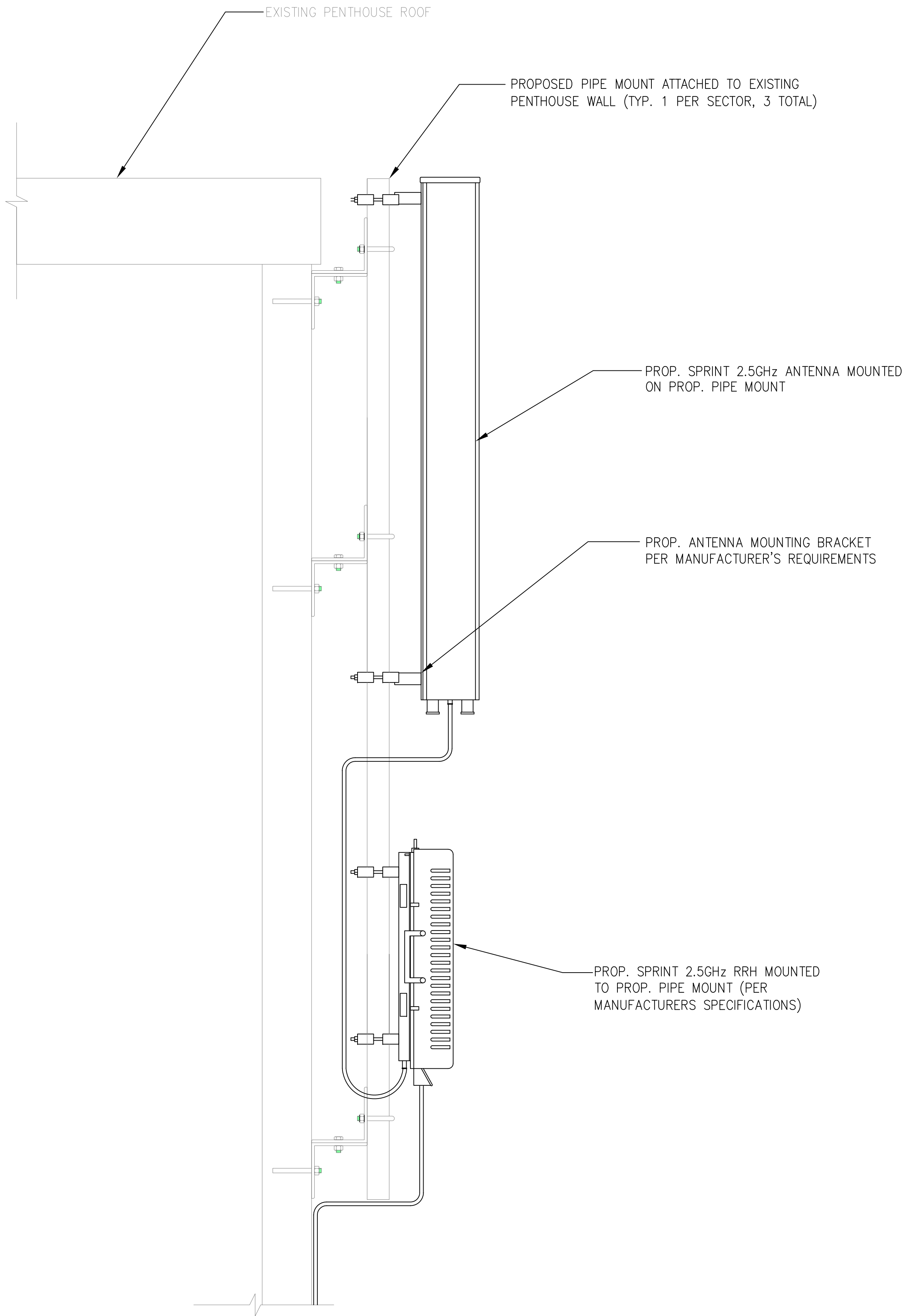
DRAWING TITLE

**EQUIPMENT DETAILS & HYBRID
CABLE SPECIFICATIONS**

DRAWING NUMBER

Z-3

- INSTALLATION NOTES:
1. CONTRACTOR TO ENSURE THAT RRH MOUNTING DOES NOT INTERFERE WITH CLIMBING LADDER, CABLE CLIMB, OR COAX PORTS.
 2. CONTRACTOR TO VERIFY IN FIELD SIZE OF EXISTING MOUNTING PIPE TO BE 2½" STD (2.88 O.D.) PIPE MAST (6'-0" LONG), (IF AVAILABLE)
 3. VERIFY EXACT RRH AND ANTENNA MODEL & AZIMUTHS WITH RF ENGINEER PRIOR TO INSTALLATION.
 4. ROTATE EXISTING ANTENNA FRAME AS NEEDED TO ACCOMMODATE INSTALL ANTENNAS.
 5. RRH PLACEMENT FOR REFERENCE ONLY. CONTRACTOR SHALL PLACE RRH IN CORRECT ORDER MATCHING INSTALL ANTENNA PLACEMENT AND ENSURE THAT THERE IS ENOUGH CLEARANCE FOR RRHS TO BE PLACED ON THE INSIDE ON THE ANTENNA FRAME/PIPE.
 6. INSTALL EQUIPMENT TO BE MOUNTED PER MANUFACTURERS SPECIFICATIONS.



1
Z-4

TYPICAL ANTENNA AND RRH MOUNTING DETAIL

SCALE: N.T.S.



1 INTERNATIONAL BLVD, SUITE 800
MAHWAH, NJ 07495
(201) 684-4000

J LEE
ASSOCIATES, LLC

753 FOREST STREET
MARLBOROUGH, MA 01752-3047
PHONE: (800) 825-6460
www.guardian-energy.com



Civil Engineering - Site Development
Surveying - Telecommunications

500 NORTH BROADWAY
EAST PROVIDENCE, RI 02914
PH: 401-354-2403
FAX: 401-633-6354



ENGINEER/LAND SURVEYOR

DATE

IT IS A VIOLATION OF LAW FOR ANY PERSON,
UNLESS THEY ARE ACTING UNDER THE DIRECTION
OF A LICENSED PROFESSIONAL ENGINEER,
TO ALTER THIS DOCUMENT.

REVISIONS

REV. #	DATE	DESCRIPTION
1	02/05/14	ISSUED FOR ZONING
0	01/29/14	ISSUED FOR REVIEW

PROJECT NO.	DESIGNED BY:	SCALE
	DRAWN BY: REM	AS SHOWN
	CHECKD BY: MRC	

PROJECT INFORMATION

BS60XC010
331 BROADWAY

331-333 BROADWAY
SOMERVILLE, MA 02143

DRAWING TITLE

MOUNTING
DETAILS

DRAWING NUMBER

Z-4